

Instructions for Registering and Paying CastleBranch Urine Drug Screening and Compliance Tracker

- **Step 1: Go to tlu.castlebranch.com**
 - Click on Place Order Button:

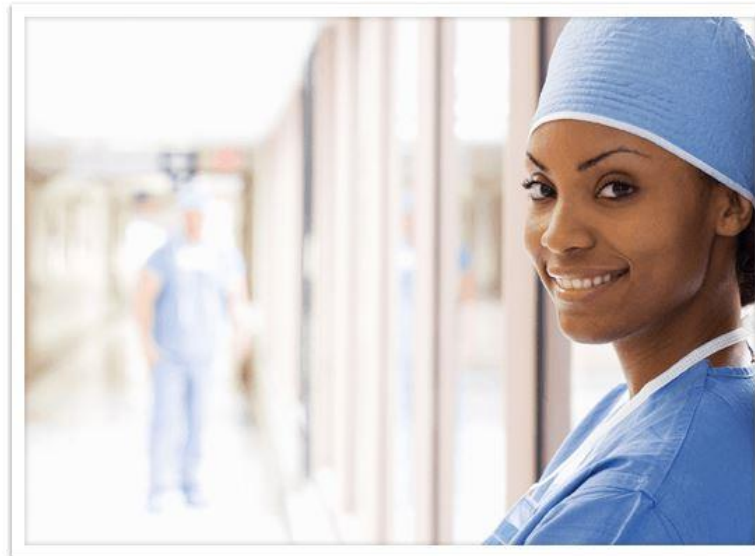


Texas Lutheran University Portal

This user-friendly portal guides you through program and package selection to quickly place your order and create your secure account.

After you complete your order and create your account, you can log in to your account to monitor your order status, view your results, respond to alerts, and complete your requirements. You will return to your account by logging into castlebranch.com and entering your username (email used during order placement) and your secure password.

Now let's get started by clicking the Place Order button below.



- **Step 2: Click on “Please Select” dropdown**
 - Make sure you select the correct campus
 - “Houston Campus” or “New Braunfels Campus”
 - Select “I need to order my Drug test and Compliance Tracker” option



- **Step 3: Scroll down to bottom of screen after you have read all the terms and conditions and make sure you have clicked the check box at the bottom of the screen.**



HOME	PACKAGE SELECTION	FAQ	CONTACT US
------	-------------------	-----	------------

Print

Package review

Order Instructions for
TEXAS LUTHERAN UNIVERSITY - NURSING - HOUSTON CAMPUS
Package Code XA31: I need to order my Drug Test and Compliance Tracker.

ABOUT

About CastleBranch

Texas Lutheran University - Nursing - Houston Campus has partnered with CastleBranch, one of the top ten background check and compliance management companies in the nation to provide you a secure account to manage your time sensitive school and clinical requirements. After you complete the order process and create your account, you can log in to your account to monitor your order status, view your results, respond to alerts, and complete your requirements.



You will return to your account by logging into castlebranch.com and entering your username (email used during order placement) and your secure password.

ORDER SUMMARY

Payment Information

Your payment options include Visa, Mastercard, Discover, Debit, electronic check and money orders. Note: Use of electronic check or money order will delay order processing until payment is received.



Accessing Your Account

To access your account, log in using the email address you provided and the password you created during order placement. Your administrator will have their own secure portal to view your compliance status and results.



Contact Us

For additional assistance, please contact the Service Desk at 888-723-4263 or visit <https://mycb.castlebranch.com/help> for further information.



I have read order instructions

Click to Continue

Step 4: Continue with your order and create your account.

- **You can then pay and pick the site where you want to do your urince drug screen as well as upload documents iunto your compliance tracker. Please make sure yo keep in mind your given deadlines.**



A  **CastleBranch** Solution.

Please Review

Texas Lutheran University - Nursing - Houston Campus includes the following package contents:

Package: XA31
Drug Test
Medical Document Manager CRR

Package Cost: \$78.00

Additional Information

This package includes document review. At the end of the order process, you will be prompted to upload specific documents required by your school for review and approval.

Click the button below to continue your order and create your myCB account. You will access your account to manage your order and view your results. If you already have a myCB account, you will have the option to log in.

- I understand that my package may require CastleBranch to conduct additional searches that may result in additional fees.
- I have read, understand and agree to the [Terms and Conditions of Use](#).

Continue